

405 North Main, Otis Kansas

www.westwindenergyllc.com

Established in 2006

Going into our 3rd year of business

Wind Turbines



Business



Agricultural
Residential



Industrial

New Location - 30,000 Square ft facility in Otis, Kansas



Manufacturing

Then & Now

Elektromat 20 kw

1979 – 198?





A stand alone
version, rated at 10
kW with
synchronous
generator. A
special blade hinge
protected the
blades from
overload

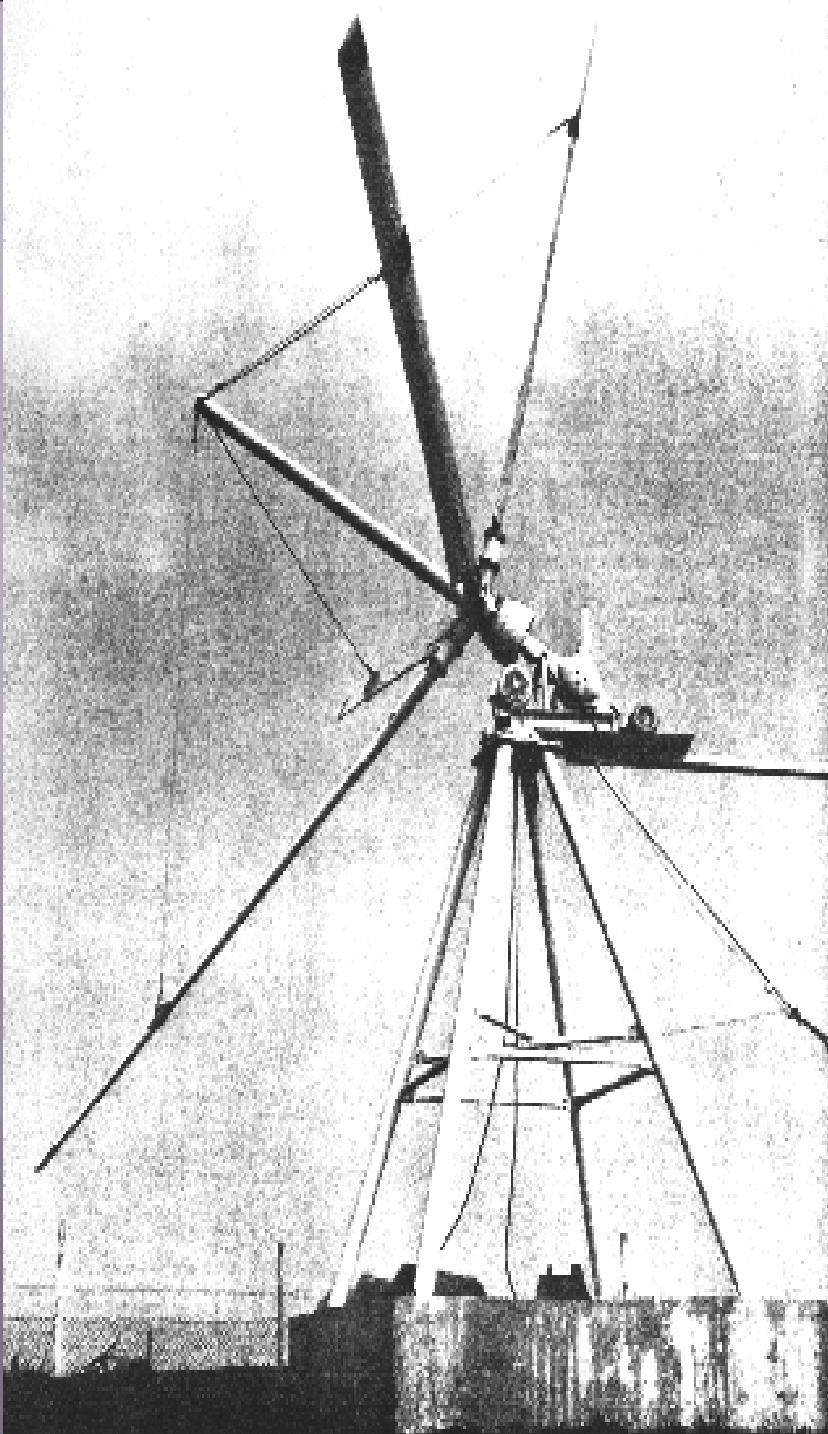
1979 – ?

15 – 25 kW Turbine

Downwind one-bladed
rotor with counterweight

1980 - ?





Downwind
rotor turbine

1975 - ?

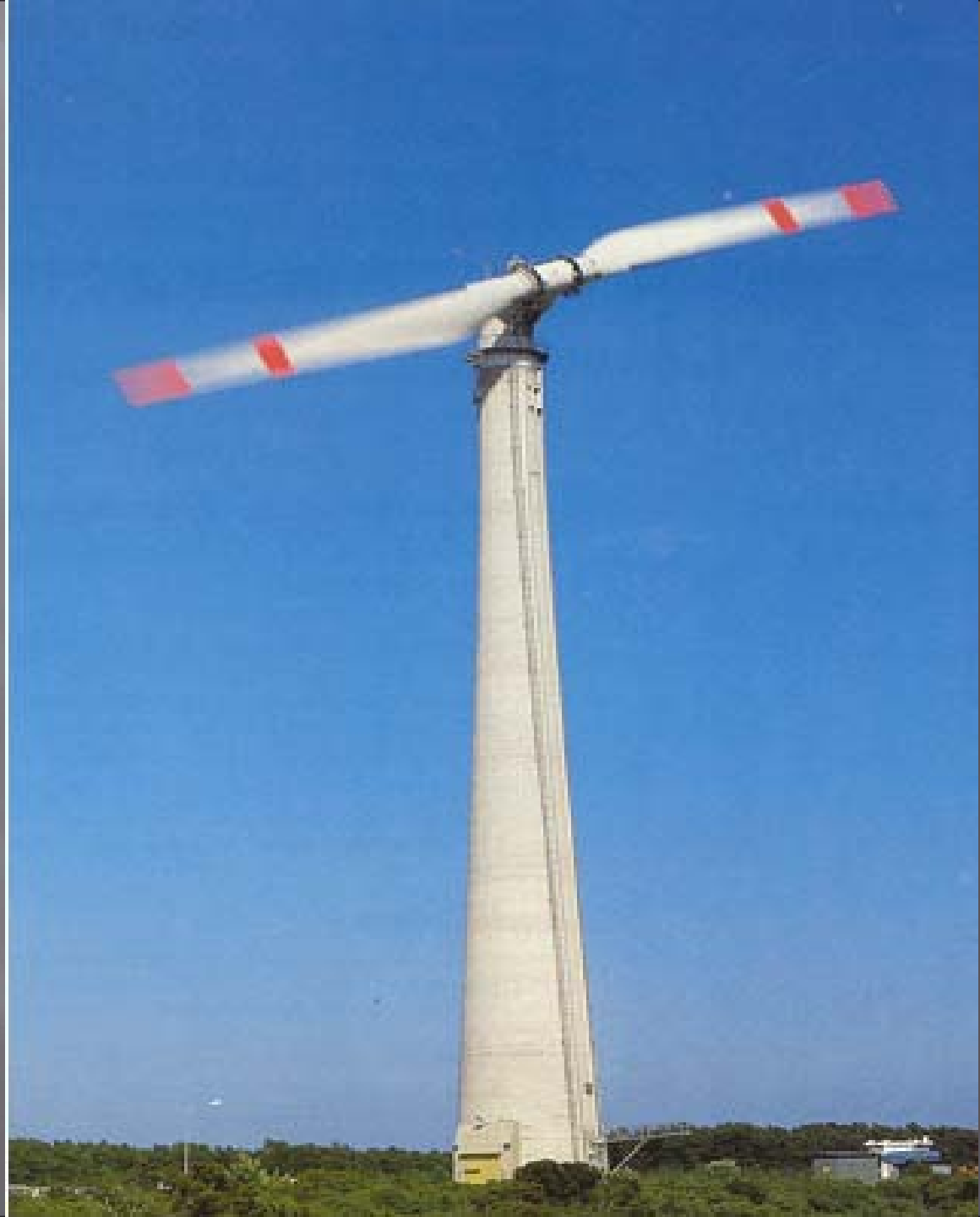
Upwind rotor made in
steelplates. Also
participating in the early
California "Wind Rush"
of the eighthies

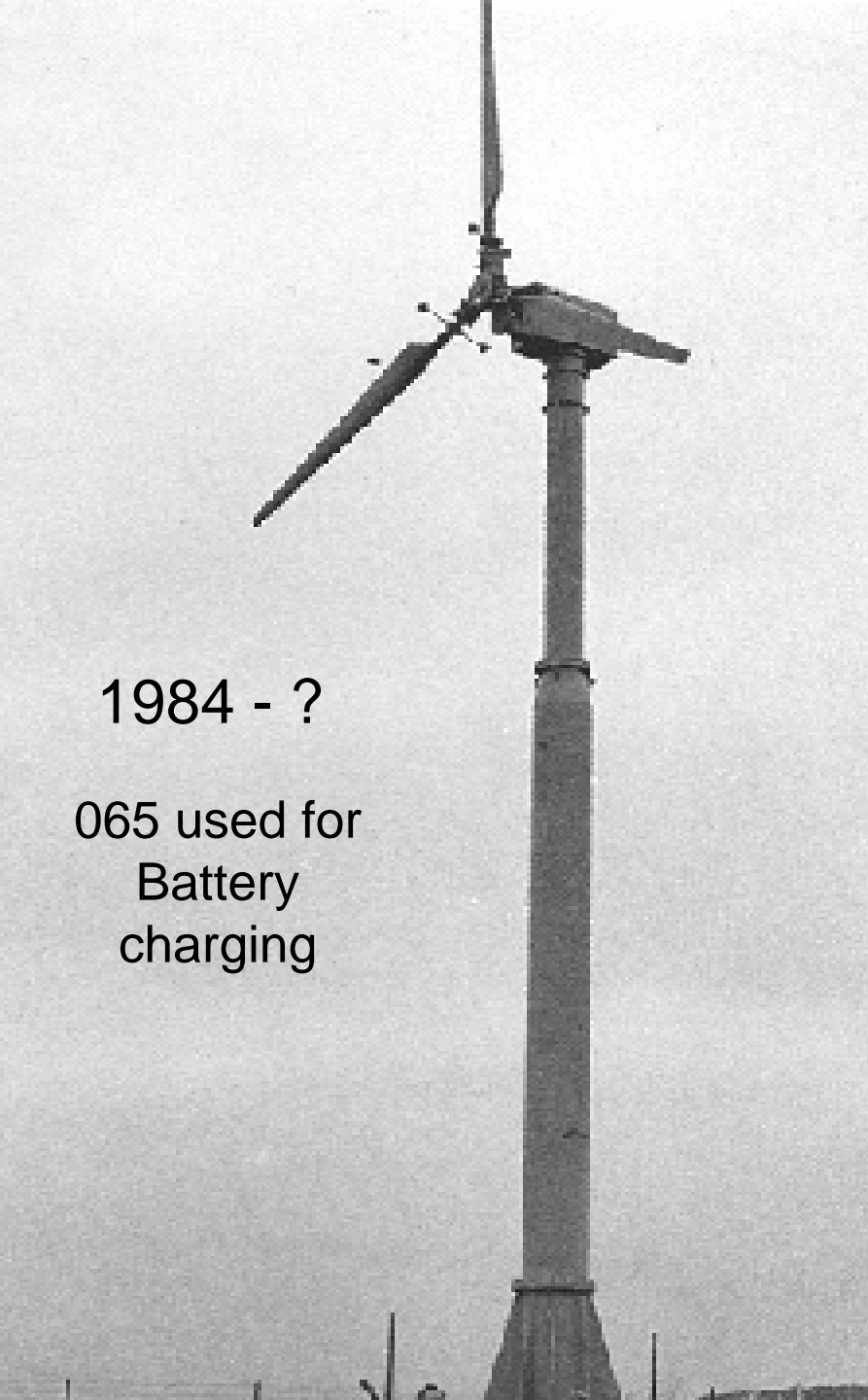
1975 - 1984



Upwind
turbine.
Blades had
welded steel
spar with
Leading edge
and trailing
edge made of
Glasfiber
Reinforced
Plastic

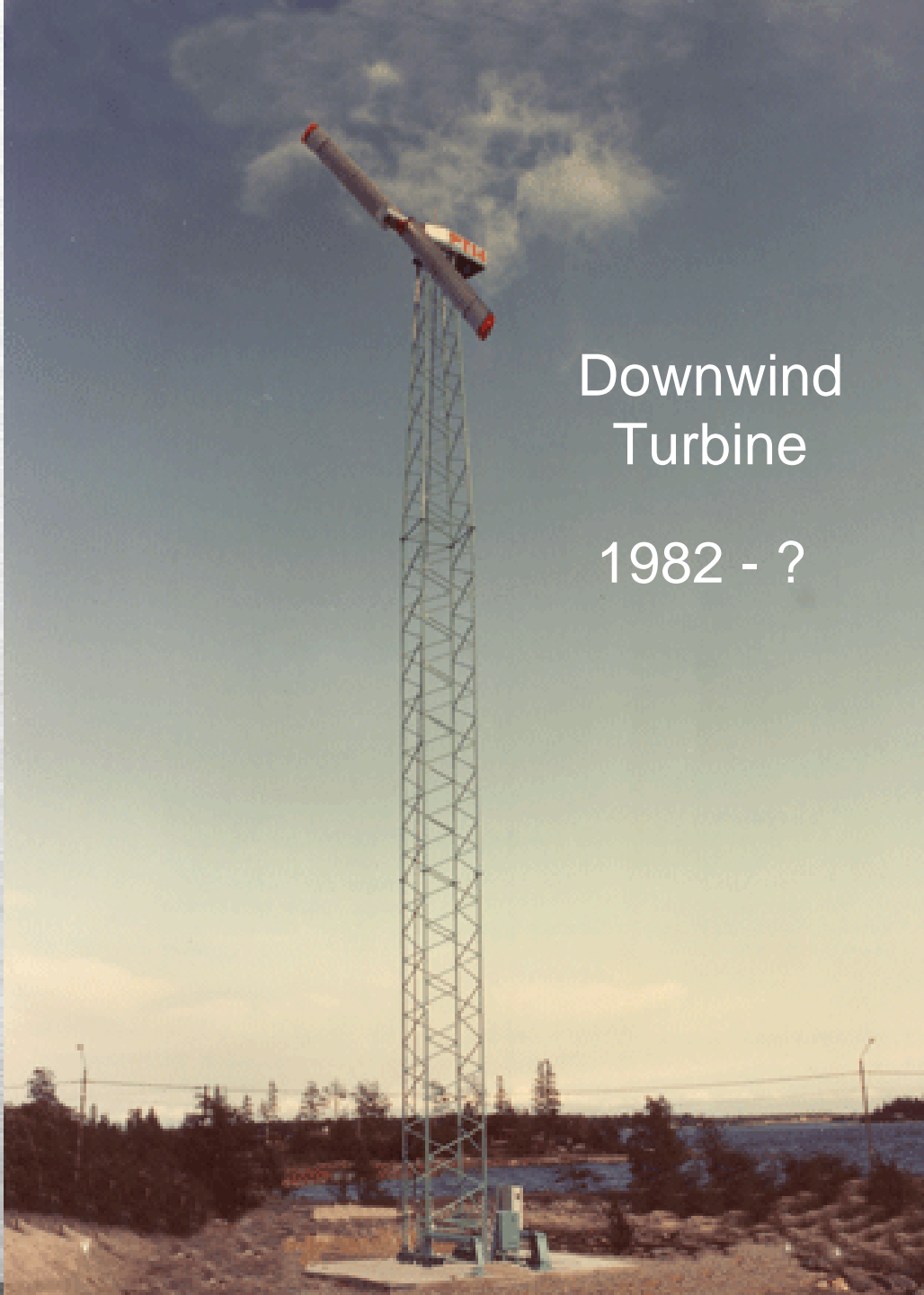
1984 - ?





1984 - ?

065 used for
Battery
charging



Downwind
Turbine

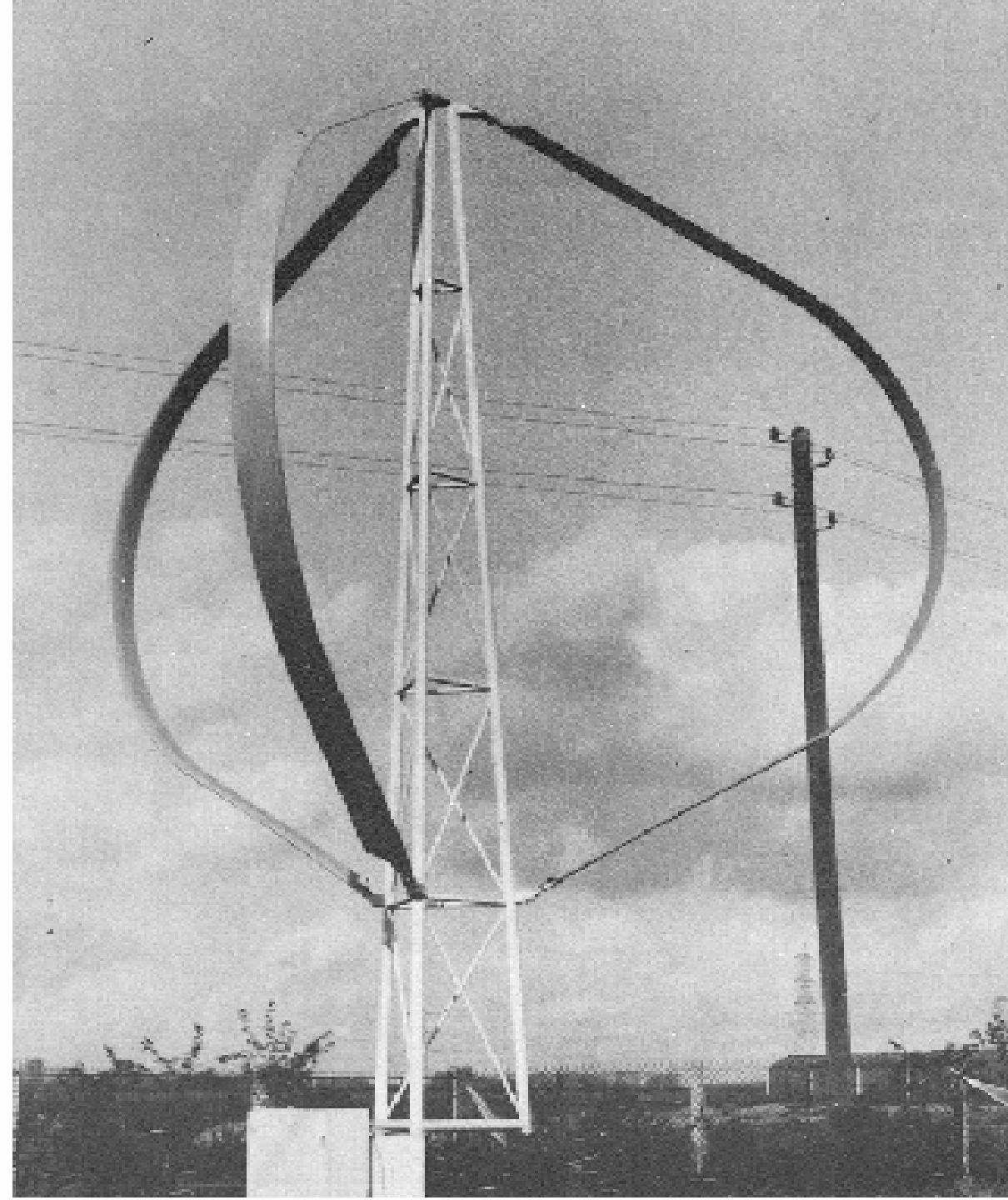
1982 - ?

Upwind turbine.
Aluminum 15 m
rotor diameter and
50 kW generator.

1980 - ?

Nicknamed – The Road Runner





Darrieus type

1980 - ?

Survivors

Nordtank

Micon

Bonus

Vestas

1983 - Current

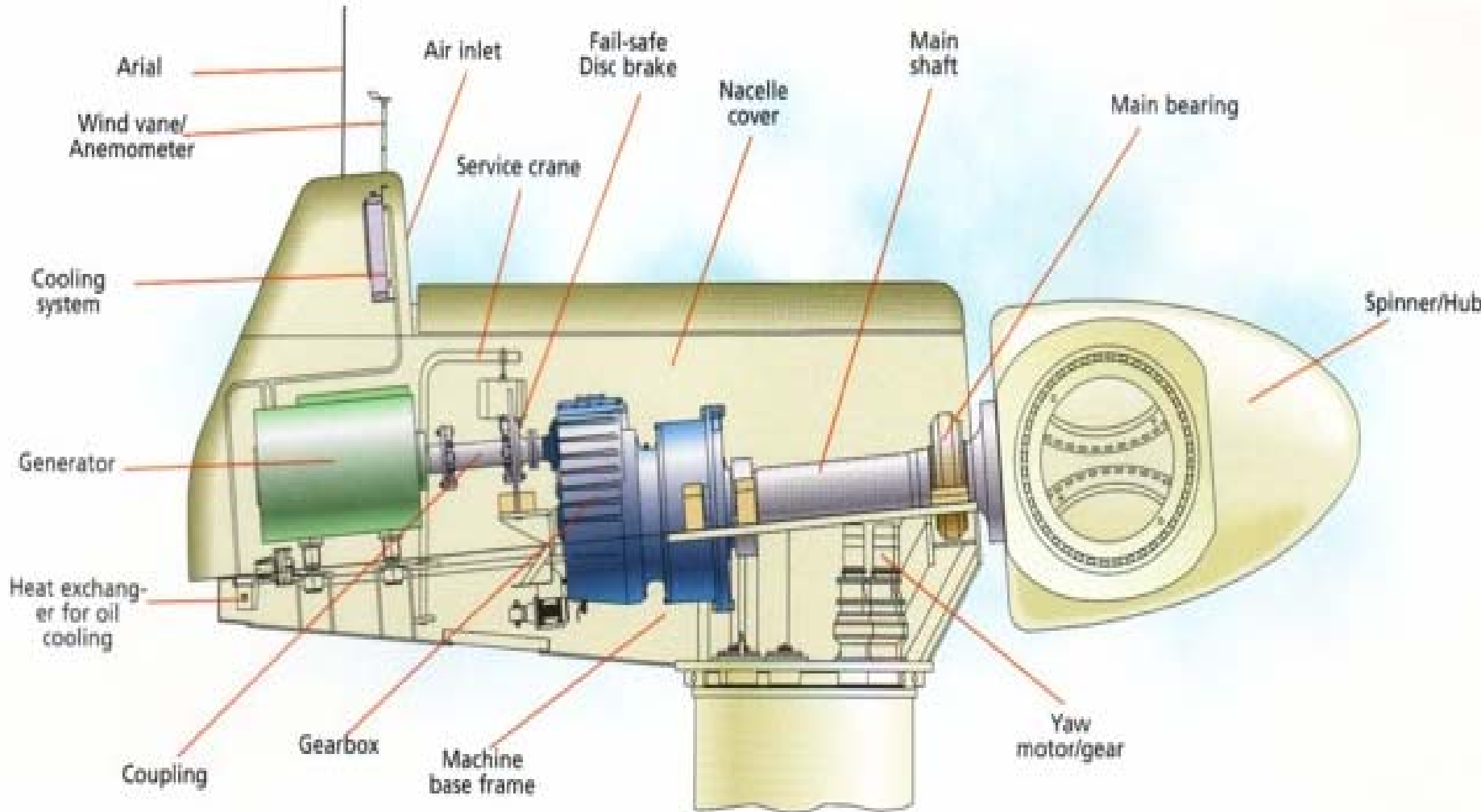


Things needed for manufacturing

Towers



Generators



Transmissions/Gear Boxes

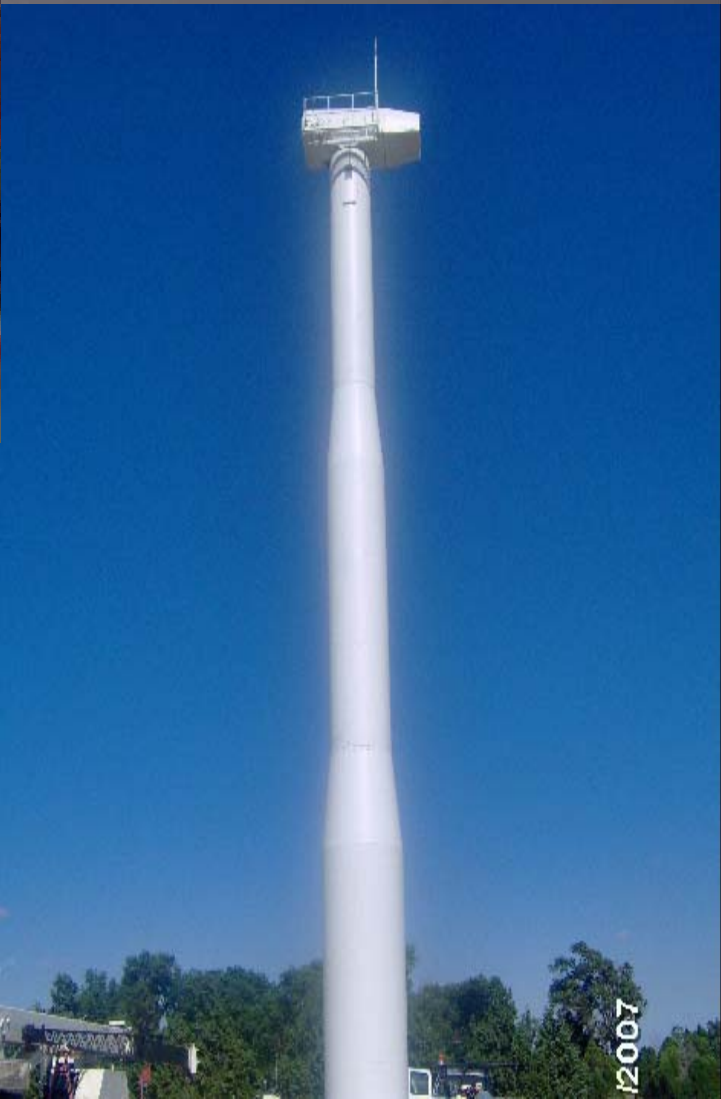


Blades





Nacelle



©2007

Nose Cones



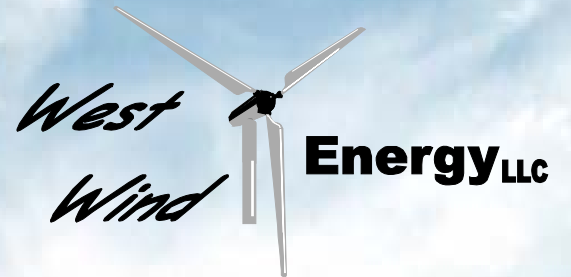
Alternant use for nose cones



Wiring & controls



West Wind Energy is excited that our new turbines will be available by the first or second quarter of 2009.



405 N Main
Otis, Kansas 67565
785-387-2626



WestWind
Energy